

## POD 1

POD 1 is the number one choice for private phone calls and a workspace for tasks which demand focusing.

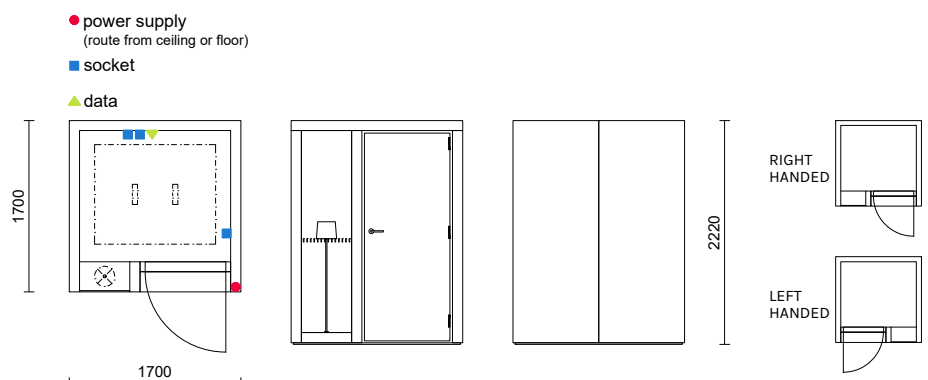


### TECHNICAL INFORMATION

AIR FLOW	Fully automated ventilation controlled by motion sensor. As standard, set to 1 hour and is adjustable up to 99 minutes. Switch for ventilation. Air flow 22 l/s.
LIGHTS	Fully automated lights controlled by motion sensor. As standard, set to 1 hour and is adjustable up to 99 minutes. Switch for lights. 2 x LED light set on the ceiling. A window lamp. Lumen 1742.
WHEELS	Installation wheels included.
ENERGY CONSUMPTION PER HOUR	Total 0,04045 kWh. Fans 0,00445 kWh. Lights 0,036 kWh. Max load 8 A.
SOCKET	3 x power sockets + 1 x data outlet included
POWER CONNECTION	From the ceiling or floor. The length of the power cord is 3 m.

### MEASUREMENTS

EXTERNAL DIMENSIONS	W1700 x D1700 x H2220 mm
DOOR	9 x 21
INNER DIMENSIONS	W1500 x D1300 x H2040 mm
PACKAGE DIMENSIONS	W1200 x D2400 x H1500 mm
WEIGHT	690 kg 239kg/m <sup>2</sup>



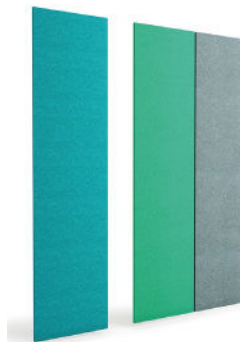
## MATERIAL DESCRIPTION

EXTERIOR	Melamine or veneered frame.
INTERIOR	Acoustic panel on the ceiling. Back wall and floor coated with carpet.
DOOR	Painted MDF door. Melamine door side panels. Door handle with satin finished stainless steel.
WINDOW	Laminated acoustic safety glass window 10 mm. Glass window includes the INTO stripe window taping.

## ADD-ON FEATURES

### POD PANEL

POD PANEL is an acoustic-friendly add-on piece for POD rooms. It can be used as a surface to attach notes, plans, and other sketches. Panels attaches easily to the POD exterior and softens the surrounding sound environment.



### ACCESSIBILITY SET

Wheelchair ramp.  
Reservation for automatic door.  
Automatic door closer.  
Hydraulic door closer.  
Kick-plates for the door and/or walls.  
Vertical and/or horizontal bar handles.



### FURNITURE SET

Furnish the POD room with INTO sofas and tables.  
For example: 2 x POINT 700, TOP LIFT HIGH 400 x 600.



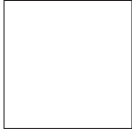
### OTHER AVAILABLE ADD-ON FEATURES

Air cooling device  
Clothing hook  
Electronical lock system  
Booking system  
Smart glass  
USB charger  
Extra power sockets  
AV systems (web camera, microphone)

## SURFACE FINISHES FOR POD ROOMS

### STANDARD PRICE, CATEGORY 1

Melamine color options



White



Dark grey

### PRICE CATEGORY 2

Veneer options



Pine



American oak



Black oak



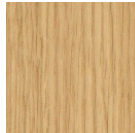
## SURFACE FINISHES FOR DOOR & DOOR SIDE PANELS

### STANDARD PRICE, CATEGORY 1



White

### PRICE CATEGORY 2



American oak

### PRICE CATEGORY 3



Clear glass 10 mm

comes with white door panels

## CARPETS FOR POD ROOMS: EX-DONO QUARTET FROM FLETCO | STANDARD PRICE, CATEGORY 1

Composition: Polyester non woven

Static electrical propensity: Antistatic

Impact sound reduction: 25 dB

Classification for use: Commercial / heavy use

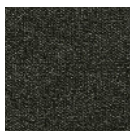
Fire resistant: Yes



393300

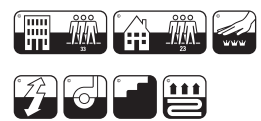


393340



393350

Ask for more colors: [sales@intoconcept.com](mailto:sales@intoconcept.com)



## CEILING ACOUSTIC PANEL FABRIC: SOUL FROM GABRIEL | STANDARD PRICE, CATEGORY 1

Composition: 100% wool

Lightfastness: 5-7

Rubbing fastness: 4/wet, 4-5/dry

Sustainability: Complies with STANDARD 100 by OEKO-TEX

Meet Möbelfakta requirements

Cleaning: regular vacuum cleaning

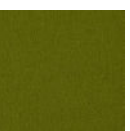
Fire resistant: Yes (S 476 Part 7, class 1 ÖNORM B 3825-B1-3800-Q1 UK)



66104



67039



68131



64086



62059



61196



60182

