

## CUBE SOLO

CUBE SOLO is a rotating swivel chair that provides privacy within an acoustically friendly and comfortable environment. Adding a TOP table turns the chair to a peaceful working area.

### MATERIAL DESCRIPTION

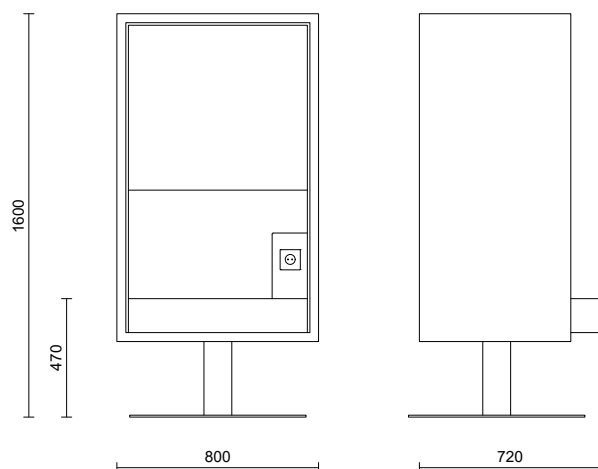
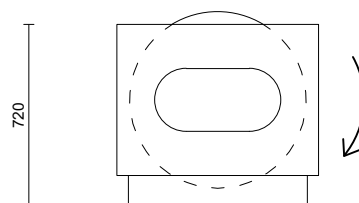
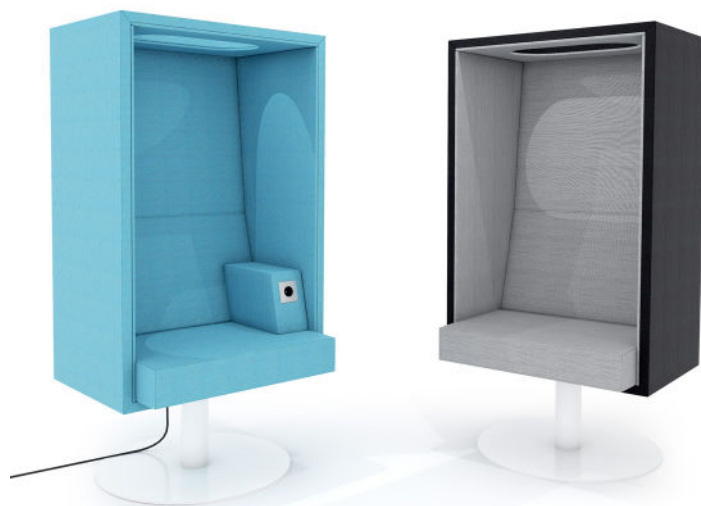
Upholstered with fabric.  
Seat and backrest upholstered polyurethane foam.  
Powder-coated steel tube base.

### OPTIONS

An optional armrest with electrical socket is available.

### MEASUREMENTS

W800 x D720 x H1600 mm



## CUBE SOLO ARMREST

### TECHNICAL INFORMATION

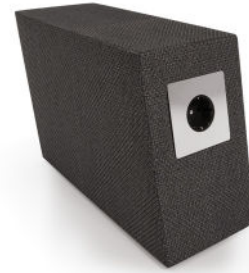
Built-in electrical socket.  
The length of the electric cord is 3 m.

### MATERIAL DESCRIPTION

Veneer structure.  
Upholstered with fabric.

### MEASUREMENTS

W155 x D340 x H260 mm



## SOFA FABRIC FOR CUBE SOLO: WOOLY FROM NEVOTEX | STANDARD PRICE, CATEGORY 1

Composition: 70% Recycled wool, 25% Polyamide, 5% Other fibers

Durability: 150 000 Martindale

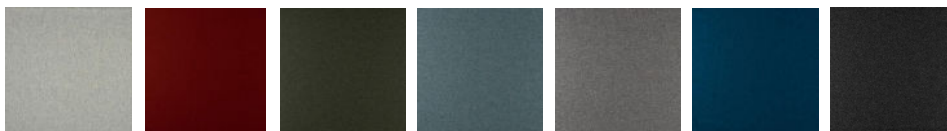
Lightfastness: 6

Crocking: 4-5/wet, 5/dry

Sustainability: certified according to Global Recycled Standard (GRS), no. CU1049784GRS-2023-00050154

Cleaning: vacuuming and dry cleaning

Fire resistant: Yes



2256 2301 1011 228881 1000 2279 1001  
Ivory melange Marsala Bottle Green Lapis Light grey Ocean Anthracite



## SOFA FABRIC FOR CUBE SOLO: MAIN LINE FLAX FROM CAMIRA | STANDARD PRICE, CATEGORY 1

Composition: 70% Virgin wool, 30% Flax

Durability: 50.000 Martindale

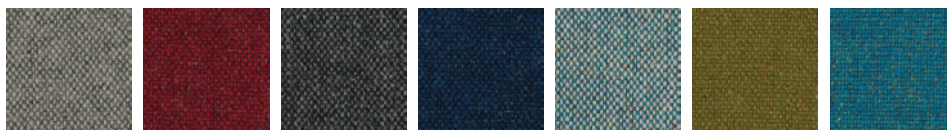
Lightfastness: 5

Crocking: 3/wet, 4/dry

Sustainability: Complies with EU ecolabel "The Flower", Compostable

Cleaning: Vacuuming and dry cleaning

Fire resistant: Yes



MLF02 MLF14 MLF16 MLF19 MLF24 MLF67 MLF37



## SOFA FABRIC FOR CUBE SOLO: PYTON FROM DELFOS FR | CATEGORY 2

Synthetic leather

Composition: 77% PVC, 23% CO

Abrasion / Martindale: dry = 51.200 /cycles, wet = 12.800 /cycles

Lightfastness: 5

Crocking: 4-5

Breathable

Fire resistant: Yes / Flame retardant, IMO Certificate



0796 Negro 1112 Smoke 0793 Mocca 1168 Cashmere

### Cleaning:

Because of its characteristics, clean and care the material frequently, with lukewarm water and a damp cloth, preferably of micro fibre. Soiling may be treated with a mild soap and proceed next to its drying by using a hairdryer or, failing that, a drycloth. It should be avoided that areas that have been treated for cleaning remain wet



breathable and flame  
retardant quality



efficient material



long-life



easy-to-clean



aesthetic value

## SOFA FABRIC FOR CUBE SOLO: GRAIN/2288 FROM GABRIEL | PRICE CATEGORY 2

Composition: 80% post-consumer recycled polyester / 20% polyester

Durability: 100.000 Martindale

Pilling: 5

Light fastness: 5-7

Cleaning: wash or dry cleaning

Fire resistant: Yes



61247

62123

64251

66233

68258

60323

OEKO-TEX®  
CONFIDENCE IN TEXTILES  
STANDARD 100



Ask for more colors: [sales@intoconcept.com](mailto:sales@intoconcept.com)